

# CT SPECIFICATIONS

## SPLIT CORE CURRENT TRANSFORMERS

### 100/200/400/600A

### 3.18 CM (1.25") WINDOW



The low-cost solution for permanent or long-term studies. The split core design means no de-energizing or wire disconnection required.

Opening "Split-Core" Current Transformer (SCT) provides linear output voltage that is directly proportional to the input current. This current transformer is easily and safely installed over existing electrical power lines without disconnecting the lines or interrupting service.

DENT's energy monitoring components are used for a variety of applications including building automation, tenant submetering, performance verification, energy management and new technology assessment.



### ELECTRICAL SPECIFICATIONS

#### Output Signal

333mV @ rated current

#### Accuracy

+/- 1% at 10% to 130% of rated current

#### Phase Shift

<2° at rated current

#### Frequency Range

50 Hz to 400 Hz

### MECHANICAL SPECIFICATIONS

#### Dimensions

8.26 x 8.5 x 2.54 cm  
(3.3 x 3.4 x 1.0")

#### Polarity

White lead is positive

#### Output Lead

Leads 2.7 m (8 ft) twisted pair  
22 AWG

#### Operating Temperature

Maximum 105°C (220°F)

DENT P/N	NOMINAL RATING (Amps)	USEFUL CURRENT RANGE (Amps)	DIMENSIONS				
			A	B	C	D	E
CT-SCM-0100	100	10 - 130	8.26 cm (3.25")	8.51 cm (3.35")	2.54 cm (1.00")	3.18 cm (1.25")	3.18 cm (1.25")
CT-SCM-0200	200	20 - 260					
CT-SCM-0400	400	40 - 520					
CT-SCM-0600	600	60 - 780					

### OTHER FEATURES

#### Window Size

3.18 cm (1.25")

#### Weight

340 g (12 oz)

#### Dielectric Strength

5000V around the case  
600V rated leads

#### Storage Temperature

Maximum 105°C (220°F)

#### Case Protection

Epoxy encapsulated housing

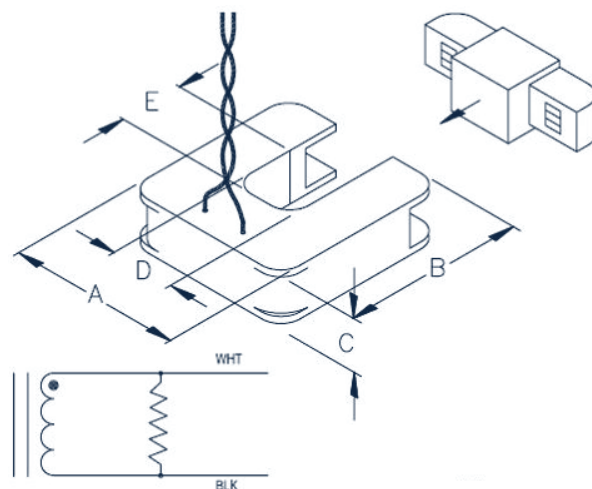
### SAFETY SPECIFICATIONS

#### ETL Listed

Compliant with IEEE C57.13-1993

#### Working Voltage

Maximum 600 Vrms



### ORDERING PART NUMBER

AVAILABLE UNTERMINATED (U) OR WITH BANANA PLUGS (B)

**CT-SCM-0100-U or -B**

**CT-SCM-0200-U or -B**

**CT-SCM-0400-U or -B**

**CT-SCM-0600-U or -B**