

## Protective Case (Part # CASE-4X) for HOBO® U14-002 LCD Temp/RH Data Logger

---

The Protective Case allows you to mount the HOBO U14-002 LCD Temp/RH data logger in wet, dusty, or condensing environments. The Protective Case is tested to NEMA 4X (IP65) Standards for protection from corrosion, wind-blown dust and rain, splashing water, and hose-directed water. A removable watertight fitting with an O-ring seal allows you to easily download data from the logger using a laptop or HOBO U-Shuttle (U-DT-1).

### Assembly Instructions

The Protective Case is shipped fully assembled. This section explains how to install the HOBO LCD Temp/RH logger in the case, including the tools required for assembly.



### Items required

To complete the assembly instructions, you will need the following items:

- Protective case, hook and loop tape, and desiccant pack (included in this package)
- HOBO LCD Temp/RH logger (Part # U14-002)
- External temperature or temperature/RH sensor (Part # S-THB-M00X or S-TMB-M0XX)
- Phillips-head screwdriver
- Pen, pencil, or other blunt instrument
- Adjustable 8 inch or 10 inch crescent wrench
- Utility or pocket knife
- Alarm relay cable (if you will be using the logger with a Remote Alarm (ARA) or Automatic Dialer (AVD-45))

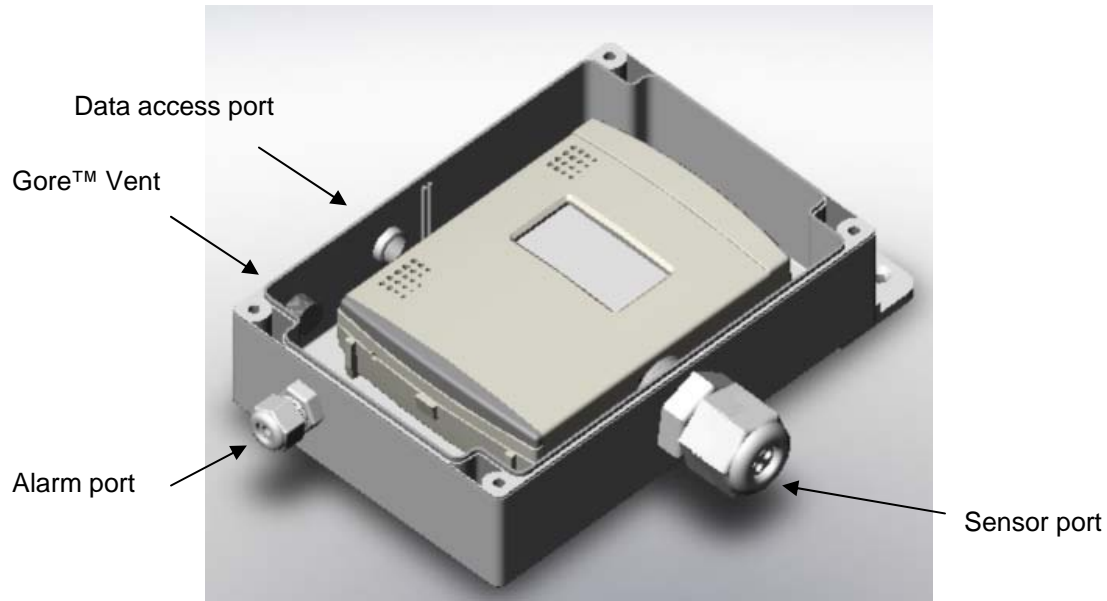
### Steps

1. Using a Phillips-head screwdriver, remove the four screws and clear cover from the case.
2. Peel the backing from one half of the hook and loop tape, and attach the tape on the back of the HOBO LCD Temp/RH logger just above the battery door.

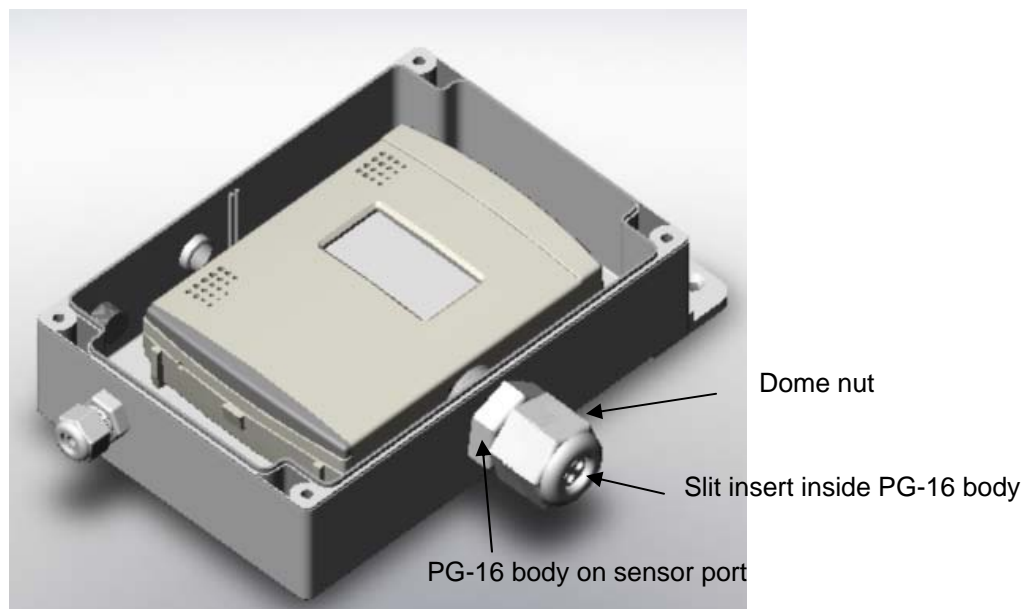
## Protective Case

3. Keep the tape mated, peel the backing off the other half of the hook and loop tape, and affix the logger to the case, LCD side up (the case should be oriented so the sensor port is on the right of the case as shown below).

As you place the logger in the case, be careful to align the jacks on the logger to the holes in the case. Specifically, make sure the sensor jack on the right side of the logger is aligned with the sensor port on the case and the data retrieval jack on the left side of the logger is aligned with the data access port on the case.



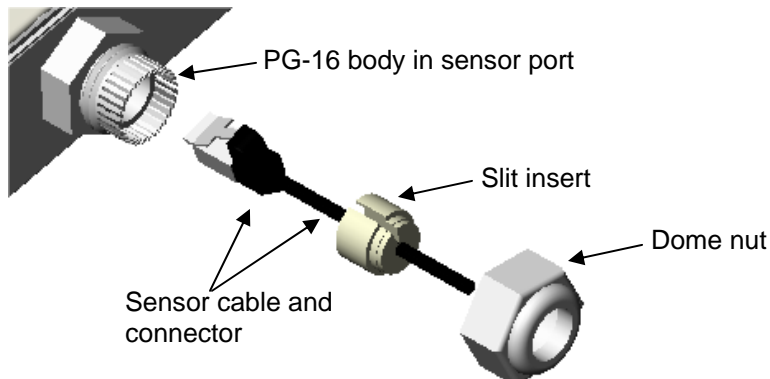
4. Remove the dome nut from the PG-16 body in the sensor port on the protective case.



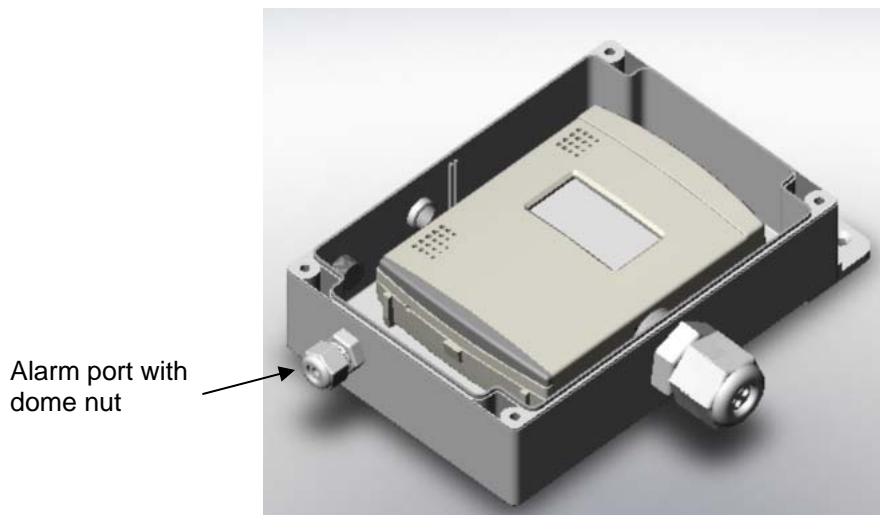
5. A slit insert is located inside the PG-16 body. Push the slit insert out from the inside of case. It is easier to do this if you lift the logger out of the case. You may need to push the slit insert out using a pen (capped end), pencil (eraser end), or other blunt instrument.

## Protective Case

- Slide the dome nut onto the end of the sensor cable. The threaded side of the dome nut should be facing towards the connector. Then, slide the cable through the PG-16 body and through the hole in the case. Push the cable into the slit insert and position it as shown.



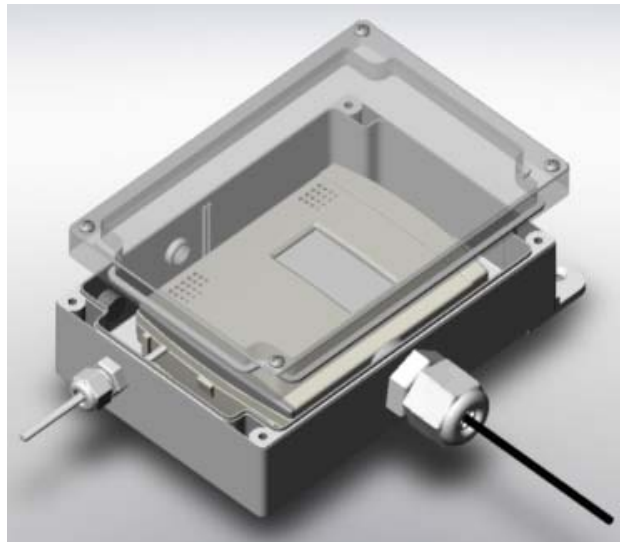
- Plug the sensor into the logger and place the logger back in the case if you removed it. Adjust the cable length as necessary so there isn't excess cable inside the case.
- Push the slit insert back into the PG-16 body. Pushing the slit insert in at a slight angle and with a slight twist may help it slide in more smoothly.
- Screw the dome nut onto the PG-16 body, tighten by hand, and then an additional  $\frac{1}{2}$  to  $\frac{3}{4}$  turn with an adjustable wrench. The dome nut must be very snug.
- If you are using a remote alarm or auto-dialer with the logger: Remove the dome nut from the alarm port at the bottom of the case. Slide the dome nut onto the alarm relay cable and then insert the cable through the alarm port. Attach alarm cable to the logger as described in the *HOBOLCD Data Logger User's Manual* (you'll need to remove the logger from the case and reposition it when finished configuring the alarm relay cable). Screw the dome nut back on, tighten by hand, and then an additional  $\frac{1}{2}$  to  $\frac{3}{4}$  turn with an adjustable wrench.



- Place the desiccant pack in the case to minimize internal condensation.

**Protective Case**

12. Screw the clear cover back onto the case. Use a Phillips-head screwdriver to tighten the four cover screws.



## **Mounting**

You can mount the case to a wall or other location for a permanent installation with or without the mounting feet included with the case. This section explains the two methods for mounting the case. Note: The diagrams in this manual show the case with the mounting feet already attached.

### **Items required**

- If using mounting feet: Slotted screwdriver and mounting kit provided with the case, which includes two mounting feet, two short flat-head screws and two long Phillips-head screws
- If not using mounting feet: Phillips-head screwdriver and four Phillips-head screws provided with the case

### **Mounting instructions**

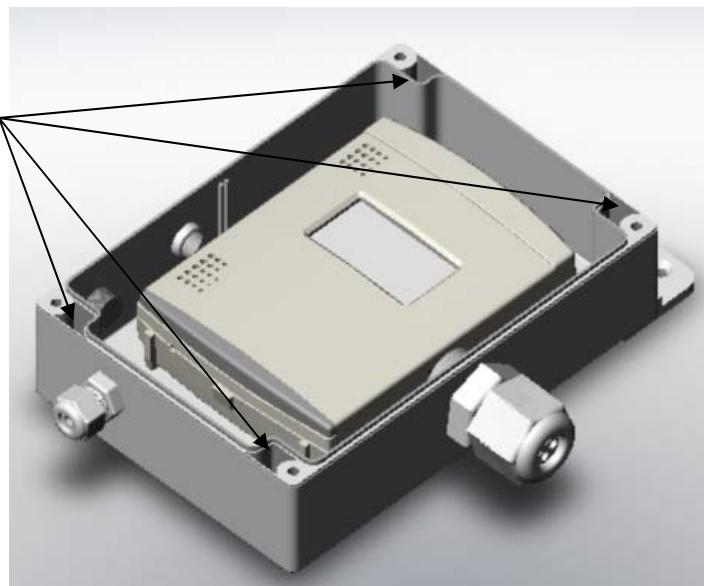
To mount the case with the mounting feet:

1. With a slotted screwdriver, screw the mounting feet onto the back of the case using the two short flat-head screws in the mounting kit provided with the case. There are two holes pre-drilled on the back of the case for attaching the feet.
2. Once the feet are attached, screw the two longer screws through the holes in the mounting feet to the wall (or other location).

To mount the case without the mounting feet:

1. Remove the clear cover from the case.
2. There are four openings next to each of the four screw holes used to attach the clear cover (as shown in the illustration below). Screw in the four Phillips-head screws through the inside of the case to the wall (or other location).

Openings for  
mounting screws



3. Replace the clear cover.

## **Data retrieval**

Use the data access port on the left side of the case to download data from the logger using a laptop or Palm handheld.

1. Remove the watertight fitting from the side of the case.
2. Insert the interface cable or Palm-to-logger cable through the fitting and plug it into the logger.
3. Read out (download) or launch the logger as desired.
4. Once finished, unplug the cable and remove it.
5. Replace the watertight fitting on the side of the case.